

Beautiful

THE CAROLE KING MUSICAL

DIRECTED BY
Jessica Franz-Martin
MUSICAL DIRECTION BY
Barbara Jurgensmeier
CHOREOGRAPHY BY
Valerie Martin
BOOK BY
Douglas McGrath
BASED ON THE SONGS BY
Carole King

SEPTEMBER
6-15



thebarnplayers.org

THE BLACK BOX THEATRE
AT THE JOHNSON COUNTY
ARTS & HERITAGE CENTER
8788 Metcalf Ave. Overland Park, KS

SEPTEMBER 6, 7, 9, 12, 13 & 14 @ 7:30pm
SEPTEMBER 8 & 15 @ 2pm

GENERAL ADMISSION - \$22
SENIORS (65+) - \$20
STUDENTS (WITH ID) - \$18
GROUPS (10+) - \$18

The Barn Players Present

Beautiful: The Carole King Musical

Book by

Douglas McGrath

Words and Music by

Gerry Goffin & Carole King

Barry Mann & Cynthia Weil

Music by Arrangement with

Sony Music Publishing

Orchestrations, Vocal and Incidental Music Arrangements

Steve Sidwell

Additional Music Arrangements by

Jason Howland

Originally Produced on Broadway by

Paul Blake

Sony Music Publishing

Mike Bosner

September 6-15, 2024

The Black Box Theatre at The Johnson County Arts & Heritage Center, Overland Park, KS

Beautiful: The Carole King Musical

Directed by **Jessica Franz-Martin**

Musical Direction by **Barbara Jurgensmeier**

Stage Manager
Brenna McConaughy

Choreographer
Valerie Martin

Lighting Designer
Chuck Cline

Sound Designer
Sean Leistico

Set Designer
Jessica Franz-Martin

Costume Designer
SJ Jeter

Intimacy Coordinator
Sarah Bezek

Props, Assistant Stage Manager, Set Dresser
Jenn Ward

Set Construction
Bill Wright

Special Thanks to

Andy Jurgensmeier, Andy Massey, Bekah's Prop Emporium, Brenna McConaughy, The Culture House, Faris Joseph Toma, Kelsie Clark-Massey, Kent McConaughy, Kevin Doyle, Olathe Civic Theatre Association, Patricia Berning, Shawnee Mission Theatre in the Park, Theatre Lawrence, The White Theatre at the Jewish Community Center

*Thank you to Jenn Ward of Humxn Photography (@humxnphotography)
for publicity and production photos.*

Beautiful: The Carole King Musical

Is presented through special arrangement with Music Theatre International (MTI).

All authorized performance materials are also supplied by MTI.

www.mtishows.com

Select sound effects by Freesound.org; Cork Pop and Pour by ultradust -- License: Attribution 4.0

ANY VIDEO AND/OR AUDIO RECORDING OF THIS
PRODUCTION IS STRICTLY PROHIBITED.

MUSIC CREDITS

- "Be Bop a Lula"** by Tex Davis and Gene Vincent. Sony/ATV Songs LLC (BMI) and Three Wise Boys Music LLC (BMI).
- "Beautiful"** by Carole King. Colgems-EMI Music Inc. (ASCAP).
- "Chains"** by Gerry Goffin and Carole King, Screen Gems-EMI Music (BMI).
- "Happy Days Are Here Again"** by Milton Ager and Jack Yellen. EMI Robbins Catalog Inc. (ASCAP). Special lyrics by Douglas McGrath and Cynthia Weil.
- "He's Sure the Boy I Love"** by Barry Mann and Cynthia Weil. Screen Gems-EMI Music Inc. (BMI).
- "I Go Ape"** by Neil Sedaka and Howard Greenfield. Screen Gems-EMI Music Inc. (BMI) and Universal/BMG (BMI).
- "It Might As Well Rain Until September"** by Gerry Goffin and Carole King. Screen Gems-EMI Music Inc. (BMI).
- "It's Too Late"** by Carole King and Toni Stern. Colgems-EMI Music Inc. (ASCAP).
- "Little Darlin'"** by Maurice Williams. Cherio Corporation (BMI) 100%.
- "The Locomotion"** by Gerry Goffin and Carole King. Screen Gems-EMI Music Inc. (BMI).
- "Love Potion #9"** by Jerry Leiber and Mike Stoller. Sony/ATV Tunes LLC (ASCAP)
- "Oh Carol"** by Neil Sedaka and Howard Greenfield. Screen Gems-EMI Music Inc. (BMI) and Universal/BMG (BMI).
- "On Broadway"** by Barry Mann, Cynthia Weil, Jerry Leiber and Mike Stoller. Screen Gems-EMI Music Inc. (BMI).
- "One Fine Day"** by Gerry Goffin and Carole King. Screen Gems-EMI Music Inc. (BMI).
- "Pleasant Valley Sunday"** by Gerry Goffin and Carole King. Screen Gems-EMI Music Inc. (BMI).
- "Poison Ivy"** by Jerry Leiber and Mike Stoller. Sony/ATV Tunes LLC (ASCAP).
- "So Far Away"** by Carole King. Colgems-EMI Music Inc. (ASCAP).
- "Splish Splash"** by Bobby Darin and Jean Murray. EMI Unart Catalog Inc. (BMI), Trio Music Co. Inc. (BMI) and Alley Music Corp. (BMI).
- "Stupid Cupid"** by Neil Sedaka and Howard Greenfield. Screen Gems-EMI Music Inc. (BMI) and EMI Longitude Music (BMI).
- "Take Good Care of My Baby"** by Gerry Goffin and Carole King. Screen Gems-EMI Music Inc. (BMI).
- "There Goes My Baby"** by Jerry Leiber, Mike Stoller, Ben King, George Treadwell and Lover Patterson. Sony/ATV Songs LLC (BMI).
- "Up on the Roof"** by Gerry Goffin and Carole King. Screen Gems-EMI Music Inc. (BMI).
- "Walking in The Rain"** by Barry Mann, Cynthia Weil and Phil Spector. Screen Gems-EMI Music Inc. (BMI). EMI Blackwood Music Inc. obo Mother Bertha Music (BMI).
- "We Gotta Get Out of This Place"** by Barry Mann and Cynthia Weil. Screen Gems-EMI Music Inc. (BMI).
- "Who Put the Bomp"** by Barry Mann and Gerry Goffin. Screen Gems-EMI Music Inc. (BMI).
- "Will You Love Me Tomorrow"** by Gerry Goffin and Carole King. Screen Gems-EMI Music Inc. (BMI).
- "Yakkety Yak"** by Jerry Leiber and Mike Stoller. Sony/ATV Tunes LLC (ASCAP).
- "(You Make Me Feel Like a) Natural Woman"** by Gerry Goffin, Carole King and Gerald Wexler. Screen Gems-EMI Music Inc. (BMI).
- "You've Got A Friend"** by Carole King. Colgems-EMI Music Inc (ASCAP).
- "You've Lost That Lovin' Feeling"** by Barry Mann, Cynthia Weil and Phil Spector. Screen Gem-EMI Music Inc, (BMI), EMI Blackwood Music Inc. obo Mother Bertha Music (BMI).



The Barn Players Board of Directors

Vida Bikales , President	Shelley Moran
Eric Magnus , Artistic Director	Ile Haggins
Lynn Reddick , Assistant Artistic Director	Darren Sextro
Barb Nichols , Vice President	Trevor French
Kathleen Marx , Volunteer Coordinator	Daniel Vazquez
Becca Wagner , Treasurer	Denice Trawicki
Kay Noonan , Secretary	

Advisory Board

Damron Russel Armstrong, Michelle T. Johnson, Beate Pettigrew,
Frank Robertson, Nancy Wallerstein, Martha Risser, Steve Sears

Operations Staff

Sean Leistico Operations Manager	Bill Wright Technical Director
--	--



Additional rehearsal facilities provided by **Prairie Baptist Church, 75th and Roe.**

thebarnplayers.org/ | facebook.com/thebarnplayers
x.com/KsBarnPlayers | instagram.com/ksbarnplayers

Musical Numbers

Act I

"So Far Away"	Carole King
"Oh Carol"	Neil Sedaka
"1650 Broadway Medley"	Ensemble
"It Might as Well Rain Until September"	Carole King
"Be-Bop-A-Lula"	Ensemble
"Some Kind of Wonderful"	Carole King, Gerry Goffin and The Drifters
"Happy Days Are Here Again"	Cynthia Weil
"Take Good Care of My Baby"	Gerry Goffin and Carole King
"Who Put the Bomp"	Barry Mann
"Will You Love Me Tomorrow"	Carole King
"He's Sure the Boy I Love"	Cynthia Weil and Barry Mann
"Will You Love Me Tomorrow"	The Shirelles
"Up on the Roof"	Gerry Goffin and The Drifters
"On Broadway"	The Drifters
"The Locomotion"	Little Eva and Ensemble
"You've Lost That Lovin' Feeling"	Barry Mann and The Righteous Brothers
"One Fine Day"	Janelle, Backup Singers and Carole King

There will be one fifteen-minute intermission

Act II

"Chains"	Carole King and Ensemble
"Walking in the Rain"	Barry Mann and Cynthia Weil
"Pleasant Valley Sunday"	Marilyn Wald, Gerry Goffin and Ensemble
"We Gotta Get Out of This Place"	Barry Mann
"Will You Love Me Tomorrow" (Reprise)	Carole King
"Uptown"	"Uptown" Singer and Ensemble
"It's Too Late"	Carole King and Ensemble
"You've Got a Friend" ...	Carole King, Barry Mann, Cynthia Weil and Don Kirshner
"(You Make Me Feel Like) A Natural Woman"	Carole King and Ensemble
"Beautiful"	Carole King and Company
"I Feel the Earth Move"	Carole King and Company

Cast

CAROLE KING.....	Kelsie Clark-Massey
GERRY GOFFIN.....	Travis Mendoza-Holt
CYNTHIA WEIL.....	Bri Nicoletti
BARRY MANN.....	Simon Schupp
DON KIRSCHNER.....	Mike Saxton
GENIE KLEIN.....	Jeannie Blau
BETTY/ ENSEMBLE.....	Katie Schieferecke
NICK/ DRIFTER/ ENSEMBLE.....	Malik Hughes
DRIFTER/ ENSEMBLE.....	Mark E McNeal, Jr.
DRIFTER/ ENSEMBLE.....	Terraye Watson
DRIFTER/ ENSEMBLE.....	Kenan Meadows
LUCILLE/ SHIRELLE/ ENSEMBLE.....	Andrea Hobley
SHIRLEY/ SHIRELLE/ ENSEMBLE.....	Sharon Johnson
LITTLE EVA/ SHIRELLE/ ENSEMBLE.....	Brielle Jefferson
SHIRELLE/ ENSEMBLE.....	Angel Gibson
JANELLE WOODS/ ENSEMBLE.....	Nicole Brunetti
MARILYN WALD/ CONNIE/ ENSEMBLE.....	Larissa Briley
RIGHTEOUS BROTHER/ ENSEMBLE.....	Will Oliver
RIGHTEOUS BROTHER/ NEIL/ ENSEMBLE.....	Christopher Morgan
UPTOWN SOLOIST/ DANCE CAPTAIN/ ENSEMBLE.....	Pancha Brown
ENSEMBLE (U/S CAROLE).....	Sarah Slightom
ENSEMBLE (U/S CYNTHIA).....	Johanna Quigley
ENSEMBLE.....	Natalia Monteiro
ENSEMBLE.....	Ruthie Wu

Orchestra

Keyboard/Conductor.....	Barbara Jurgensmeier
Keyboard.....	Michelle McIntire
Guitar.....	Dorian Allen
Bass.....	Lindsay Lovejoy
Drums.....	Morgan Rogers
Percussion.....	Aggie Williams
Reeds.....	Holly Hague
Reeds.....	Ashley Cypher
Trumpet/Horn.....	Andrea Rogers
Trombone/Bass.....	Robyn Truster

KC MELTING POT THEATRE

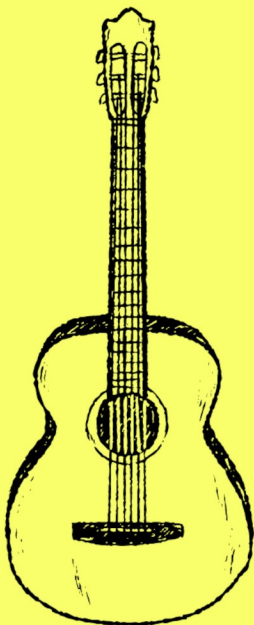
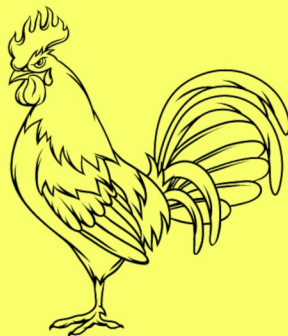
at Just Off Broadway

3051 Penn Valley Dr, KCMO 64108

SEVEN GUITARS

BY AUGUST
WILSON

DIRECTED BY
MELONNIE WALKER



SEPTEMBER
2024



1TH
kc mpt
SEASON

Ticket Information:

Ticket price \$30.00

Seniors/Students \$25.00

Group rates available

Contact us at 816-226-8087

FOR TICKETS VISIT KCMELTINGPOT.COM

CAST



JEANNIE BLAU (Genie Klein) is overjoyed to be making her debut with The Barn Players! Several recent credits include *Dead Man's Cell Phone* (Bell Road Barn Players); *The Wild Women of Winedale* (Chestnut Fine Arts Center); *The Last Night of Ballyhoo* (The White Theatre); *Deceit* (2019 KC Fringe Festival); *A Flea in Her Ear* (OCTA); *Sense and Sensibility* (OCTA); *The Triangle Factory Fire Project* (STG); *Ghost-Writer* and *Black Pearl Sings!* (Spinning Tree Theatre). Film credits include *The House on Pine Street* (E3W Productions). Enjoy the show!



LARISSA BRILEY (Marilyn Wald/ Connie/ Ensemble) is thrilled to be back on stage with The Barn Players! Past credits include *The Odd Couple* (The White Theatre); *The Curious Incident of the Dog in the Night-Time* (The Barn Players) and *Violet* (OCTA). She would like to thank her family and friends for their continued support.



PANCHA BROWN (Uptown Soloist/ Dance Captain/ Ensemble) is thrilled to be back with The Barn Players. Some of her past credits include: *Legally Blonde* (Sonya the Stylist); *Disenchanted* (Princess Badroulbador); *The Prom*; *Kinky Boots*; *Footloose* (Lulu Warnicker); *Mamma Mia!*; *Sweet Charity* (Nicki); *In the Heights* (Camila Rosario); and *Chicago*. Pancha would like to thank her parents for their love, support, and always believing in her. It's time to sit back, relax, and enjoy some Carole King music. Thank you for supporting local theatre. Enjoy the show!



NICOLE BRUNETTI (Janelle Woods/ Ensemble) is extremely excited to be back on stage again after taking a break from performing. Some of her previous acting credits include Wednesday Addams (*The Addams Family*) and Inga (*Young Frankenstein*). She has been a lover of musical theatre since she could walk, and is eternally grateful to the production team for giving her this opportunity. She would also like to thank her amazing coworkers (TDG!) for encouraging her to pursue musical theatre again. Most importantly, Nicole would like to thank her mom for being her #1 supporter, especially during kitchen karaoke!



KELSIE CLARK-MASSEY (Carole King) began her VO career in KC in 2008. She trained in sketch comedy and stand-up in LA from 2010-2013. She came back to KC in 2013 and started teaching at The Culture House. Kelsie is working on a new record of original poetry and songs, travels as a dueling piano bar player, and is a puppeteer with StoneLion Puppets. She would like to thank her husband, Andy, for his support and literal magic. And her son, Reginald, for inspiring her to play and create! You can visit kelsieclark.com to see where to find Kelsie next.



ANGEL GIBSON (Shirelle/ Ensemble) is a multi-faceted creative; a passionate vocalist, whose love for rock, jazz, and alternative music weaves its way into soul and R&B! Just Angel has been seen at Music Theater Heritage (Ruby Room, *Piece of My Heart*) and The Black Repertory Theatre of Kansas City (*After Midnight*- Osceola Mays; *Texas in Paris*). Her band, The Wades, can be found playing eclectic takes on pop music, and Just Angel's originals, "From Part 1&2," and her new single, "Dumb," released on August 9th!



ANDREA HOBLEY (Lucille/ Shirelle/ Ensemble) is thrilled to be back in her fourth show at The Barn! Past Barn Players shows are *Victor/Victoria*, *Grand Hotel*, and *Follies*! Some previous credits include: *Rocky the Musical* (MTKC Pro), *Elephant & Piggie* (LAC), and *Junie B Jones* (TYA). Big thanks to all of my Friends and Family for always supporting my dreams and crazy adventures! XOXX Numbers 6:24-26



MALIK HUGHES (Nick/ Drifter/ Ensemble) is excited to be a part of this production and have the opportunity to share this story on stage. Malik was most recently seen in CTI's production of *Little Shop of Horrors*, where he played the voice of Audrey II. He is a graduate of Central Methodist University with a Bachelor of Arts in Vocal Performance. Malik would love to give a special thanks to the cast and the production staff as we went through this journey together. He also wants to give a huge thanks to his family and friends who have supported him throughout his journey of performing!



BRIELLE JEFFERSON (Little Eva/ Shirelle/ Ensemble) 17-year-old Brielle is an actress and singer, recently making her debut at the "Best of Fringe" show, *Black Man Missouri*. She also performed at Starlight Theatre's 36th Annual Benefit Gala alongside Kalen Allen and upcoming artist LORRYNNE. In 2017, she received the Vincent Legacy Scholarship, which she has used to train in classical singing and acting. Brielle is very excited to continue expanding her performing arts career! She would like to thank Kameron Cole for helping her get into the acting and singing world.



SHARON JOHNSON (Shirley/ Shirelle/ Ensemble)

This is Sharon's 8th show at The Barn (last seen as Marley in *Escape to Margaritaville*). Sharon has performed locally at many theaters, recently in *Pippin* (OCTA), *Bat Boy: The Musical* (The Arts Asylum), and *The Color Purple* (Metropolitan Ensemble Theatre). Favorite shows include *Halftime the Musical* (TIP) and *The Color Purple*. Love and peace!



MARK E. McNEAL, JR. (Drifter/ Dance Captain/ Ensemble) is a daring guy of mystery & champion of left; scales rock bottom to tip top, like from bass to treble clef. When there's some villain whose bite is worse than bark, here comes Darkwing Mark. Cloud of smoke & he appears, master of surprise. Who's that cunning mind behind that shadowy disguise? Nobody knows for sure, but with baddies he'll have a lark. (On Mark, get set. Let's go!) Darkwing Mark! When there's trouble, you call DW - Darkwing Mark. Let's. Get. Dangerous!



KENAN MEADOWS (Drifter/ Ensemble) is elated to be performing in his first show at The Barn. He was previously Bynum (*Joe Turner's Come and Gone*), James Baldwin (*Only the Wounds and Weapons Have Changed*), and Grady (*The Color Purple*). He is proud to be part of an amazing cast and is having a blast singing his heart out.



TRAVIS MENDOZA-HOLT (Gerry Goffin) is thrilled to be making his Barn Players debut with such a talented cast and creative team! Travis' recent credits include Old Prince Bolkonsky/Andrey in *Natasha, Pierre, & the Great Comet of 1812* (Fishtank Theatre), William Barfee in *The 25th Annual Putnam County Spelling Bee* (TIP), Riff Raff in *Rocky Horror* (Padgett Productions), and Woof in *Hair* (Padgett). Travis would especially like to thank his husband, Delano, whose immense love for theatre continually inspires him and reminds him why he chose to be an artist.



NATALIA MONTIERO (Ensemble) is excited to be making her debut at The Barn. Some of her recent performances include *The Little Mermaid* at the J (Allana), *Beauty and the Beast* with Leawood Stage Company (Ensemble) and *Rock of Ages* with Mid-Life Players (Justice). Before moving to Kansas in 2022, she performed in Sao Paulo, Brazil as Andrea Sachs in *The Devil Wears Prada*, Molly in *Across the Universe*, and Wednesday in *The Addams Family*. Natalia would like to thank her husband, her family in Brazil, and her new friends in Kansas for all the love and support.



CHRISTOPHER MORGAN (Righteous Brother/ Lou Adler/ Neil Sedaka) is an actor, singer, and musician from Kansas City, Missouri, returning for his second production with The Barn Players. After actively participating in theatre through high school and college, Christopher took a brief hiatus from the stage to help out family and start a career in finance. This year, he returned to theatre and has had a wonderful time getting to know and work with some of the amazing artists in the KC Metro area. Christopher's past roles include: Otto Frank in *Diary of Anne Frank*; Lt. Peter Wright in *The Secret Garden*; and Man in *Romantic Fools*.



BRI NICOLETTI (Cynthia Weil) is thrilled to be back at The Barn after playing Emma Goldman in last year's *Ragtime* in Concert. Bri holds her BFA in Musical Theatre from The Theatre Conservatory at Chicago College of Performing Arts. While in Chicago, Bri worked with Quest Theatre Ensemble and Kokandy Productions before "retiring" from acting and going on to sing professionally throughout the city. She moved to Kansas City in 2018 and has continued to sing professionally throughout the area, and has enjoyed returning to the stage. Love and gratitude to this amazing cast and crew, to Cody, and to Cynthia for

paving the way.



WILL OLIVER (Righteous Brother/ Little Diamond/ Bobby Vee) is ecstatic to grace the stage once again with The Barn Players! Some of his past credits include Vlad (*Anastasia*), Kerchak (*Tarzan*), and Ensemble/Quartet member (*Bye, Bye, Birdie*). Will would like to thank his family and friends for their enduring love and support on his journey as an aspiring young actor, and to the director, Jessica, for this great opportunity!



JOHANNA QUIGLEY (Ensemble/ Cynthia Understudy) is stoked to join The Barn Players for her first production with the company! She is a native of Prairie Village, and just received her BFA in Acting from Texas Christian University! Most recently, you could find Johanna as Benvolio in Courtyard Shakes' production of *Romeo and Juliet*, and over in Prague in Sharon Ott's production of *As You Like It* as Celia! She wants to thank her incredible family for always supporting her theatrical endeavors!



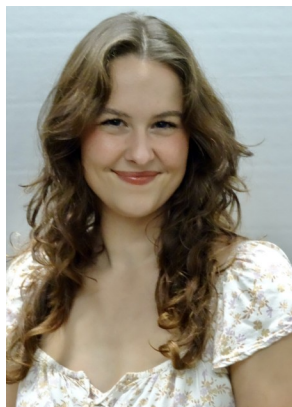
MIKE SAXTON (Don Kirschner) returns to the stage after ten years building businesses helping electrify commercial vehicle fleets. Before this, Mike performed mostly with Leawood Stage Company in shows like *Bye Bye Birdie* (Albert Peterson), *Guys & Dolls* (Rusty Charlie), *Oklahoma!* (Ali Hakim), and *South Pacific* (Buzz Adams... and a very loud sailor). Mike got his theater start at Idyllwild Arts as Riff in *West Side Story* (playing alongside Rain Pryor as Anita). He may be better known - internationally - for his enviable college athletic career as a Tuba section leader for three years in the Trojan Marching Band. Hi lovely wife Britt!



KATIE SCHIEFERECKE (Betty/ Ensemble) is thrilled to be back on stage with The Barn Players. She has a BA in Theatre from UMKC. Katie was recently seen in *Escape to Margaritaville* with The Barn and *Pippin* at OCTA. Other favorite roles include Dorine in *Tartuffe* and Veta Simmons in *Harvey*. Katie is very grateful for the opportunity to be a part of The Barn Players community. She would like to thank her family and friends for all their support!



SIMON SCHUPP (Barry Mann) Barn Debut! He is happy to share the stage with some very talented performers. Simon has performed with The Coterie, Music Theatre Heritage, Spinning Tree, The White Theatre, and many others. Some favorite roles include Horton in *Seussical*, Padre in *Man of La Mancha*, and Mitch Mahoney in *Spelling Bee*. He teaches second grade in the Raymore-Peculiar School District, and he's super passionate about teaching kids to read. Thank you Jessica, Barbara, and Valerie for the fun opportunity! Love to Anne, Isaac, and Ivy. Enjoy the show!



SARAH SLIGHTOM (Ensemble/ Carole Understudy) is ecstatic to be a part of her very first show at The Barn! Her previous roles include *The Sound of Music* (Maria) at the Manhattan Arts Center. She appreciates how much she has learned from the wonderful cast and crew of this production, and would like to thank her friends and family for supporting her love of musical theatre.



TERRAYE (RAY) WATSON (Drifter/Ensemble) is excited to make his debut with The Barn Players! His past productions include: Lydia R. Diamond's *Stick Fly* (BRTKC); *FunnyHouse of a Negro* by Adrienne Kennedy (KCMP); *The Inheritance* part 1 & 2 by Matthew Lopez (Unicorn); *Process Inevitable* by Ace Lovelace (KC Fringe); *DOT* by Coleman Domingo (KCAT); *The Color Purple* and *The Complete Works of William Shakespeare: (abridged) [revised]* (MET). Most recently he appeared in *Joe Turner's Come and Gone* at the Metropolitan Ensemble Theatre. Terraye is over excited to be playing with this exceptional cast in this high-energy musical. He would

like to thank his family and friends for the ongoing support!



RUTHIE WU (Ensemble) is a clinic coordinator by day, and an actress, musician, artist, and author by night. She received her BA in Interdisciplinary Studies (Theatre, Theology, and Global Resources) from Wheaton College, and has trained with Andy Garrison at the Actor Training Studio. Ruthie appeared in *Dragons Love Tacos* (Cyclopedic Ensemble) and *The Search for Anno Domini* (Melting Pot). She loves how theatre can put actions to feelings that are otherwise difficult to process, creating an experience that reminds people of their shared humanity. This is Ruthie's Barn Players debut.

CITY THEATRE OF INDEPENDENCE PRESENTS



NOISES OFF

Directed by Bill Pelletier
By Michael Frayn

Sept. 6, 7, 13 & 14 at 7:00 pm
Sept. 8 & 15 at 2:00 pm



BOX OFFICE
816-370-6654

CTI
City Theatre of Independence

CREW



JESSICA FRANZ-MARTIN (Director/Set Design) is thrilled to be back directing at The Barn, where previous shows include directing *Curious Incident of the Dog in the Night-Time* and portraying Elizabeth Proctor in *The Crucible*. Some of her directing credits include *Peter and the Starcatcher* (OCTA), *Sense & Sensibility* (OCTA) and *Murder on the Orient Express* (Theatre Lawrence). Special thanks to my incredible team, this cast for saying “yes, and,” and this crew for doing ALL THE THINGS. Love to Dave, Supes, & the cats.



BARBARA JURGENSMEIER (Music Director) could not ask for a better cast, crew, or production team with which to make her musical directorial debut! She is typically found behind the piano, accompanying community and professional shows around Kansas City (sometimes in her living room at cast parties). Barbara is also a music therapist and offers early childhood music classes for neurotypical and neurodivergent kiddos.

Some of her favorite shows to play have been *Mamma Mia* (The Barn Players), *Cinderella* (Theatre in the Park), and *Natasha, Pierre & The Great Comet of 1812* (Fishtank Theatre). Barbara would like to thank her family as well as Michelle McIntire and Delano Mendoza-Holt- friends and mentors who have provided support, love, and shining examples of what an excellent music director looks like.



VALERIE MARTIN (Choreographer) is thrilled to be back at The Barn, where she began her choreography journey. She has directed and/or choreographed for TIP (indoor and outdoor), The White Theatre at the J, The Barn Players, OCTA, JCCC, Sharp Women, and Church of the Resurrection. She is the resident choreographer for the Heartland Men's Chorus and BVW. She also teaches workshops, coachings, and private lessons.

She loves working with her sister, and she's grateful to have had this opportunity. This team and company are delightful. Super thanks to Super people.



BRENNA McCONAUGHEY (Stage Manager) jumped at the chance to work on this show as soon as she heard who was involved. She was most recently seen on stage at Leawood Stage Company in *Legally Blonde*. Barn shows: *Company* (Sarah), *The Laramie Project* (costumes), *Victor/Victoria* (LaBisse), *Mamma Mia!*, *Grand Hotel* (stage manager- Barney Award winner), *Bridges of Madison County* (Marge). TIP: *Sweet Charity* (Helene), *In the*

Heights (costumes/ASM). The White Theatre at the J: *The Odd Couple* (Olive). The Arts Asylum: *Gabby for God* (stage manager). Brenna also costumed *Sunday in the Park with George* (Buddy Award winner) and *We Are Blood* (OCTA). Thank you for supporting the arts! Much love to the family.

SJ JETER (Costume Design) is excited to be back at The Barn with some of their favorite folks. Last seen on the Barn stage in *Titanic: The Musical*, SJ has costumed many a Barn production, including last season's *Tick, Tick... Boom!*, and this season's *Escape to Margaritaville*. Catch their costumes next in *Reefer Madness* at the Arts Asylum. All my love to Minky and Ferguson.

JENN WARD (Props Design/Set Decoration/Assistant Stage Manager) is so happy to be participating in her very first show with The Barn! Previously, she has been known for her work on stage with OCTA. Now, she is enjoying her time behind the scenes, including designing props for Theatre in the Park's *Sister Act*. Jenn would love to thank her partner-in-crime, Scott for his never-ending support of the many activities her ADHD brain decides to join in. Also, her children, Isaiah and Niko, for being up for any adventure she decides to take them on.

SARAH BEZEK (Intimacy Coordinator) is a choreographer, director, and stage manager in the Kansas City metro. In the pursuit of ensuring theatre is a safe and inclusive space, Sarah is training in Intimacy Coordination with IDC, Inc., and is excited to advocate for this growing field in the KC performing community. You may have seen her creative contributions at many other local theaters, including: Gladstone Theatre in the Park, The White Theatre at the J, Olathe Civic Theatre Association, and Music Theatre of Kansas City Pro. Next up: her 7th year as Choreographer at Spring Hill High School.

CHUCK CLINE (Lighting Design) *Beautiful* is Chuck's 31st production with The Barn Players, having served as Lighting Designer on recent Barn productions, including: *Escape to Margaritaville*; *Witness for the Prosecution*; *Tick, Tick... Boom!*; *Next to Normal*; *Company*; and *The Laramie Project*. Chuck would like to thank the fabulous cast & crew, and, most importantly, the lifeblood of his entrepreneurial, artistic, and fiduciary spirit, David Addison. Enjoy the show!

SEAN LESTICO (Sound Design) has been working with the Barn Players since 2004, in various capacities as actor, TD, lighting designer, sound designer, and is currently the Operations Manager for the Barn. Also, he is the Scene Shop Foreman and Resident Sound Designer and mentor for the Johnson County Community College Theatre Department. Hi, Mom. Hi Nora ☆☆☆♥☆☆. Thank you, and enjoy the show!

Coming in November to The Barn Players...

6 original ten-minute plays.

6 directors.

1 great evening of theatre.

2024

6x10

TEN MINUTE
PLAY FESTIVAL



PRODUCED BY
Lynn Reddick

November 15-17

NOV 15 & 16 @7:30PM / NOV 17 @2PM



THEBARN
PLAYERS

THE BLACK BOX THEATRE
AT THE JOHNSON COUNTY
ARTS & HERITAGE CENTER
8788 Metcalf Ave. Overland Park, KS

thebarnplayers.org
ALL SEATS \$15

Join us for our 2025 Season, our 70th in the Kansas City Area, at the Black Box Theatre at the Johnson County Arts & Heritage Center, 8788 Metcalf Ave., in Overland Park, KS

Barn KIDS camp and performances will be at
Bishop Miege High School, 5041 Reinhardt Drive, in Mission, KS

HARVEY

January 10-19

JESUS CHRIST SUPERSTAR

May 9-18

THE ADDAMS FAMILY, YOUNG@PART EDITION

Barn KIDS, Performance Dates: July 25-27

1776

August 8-17

MERRILY WE ROLL ALONG

September 5-14

2025 6x10 PLAY FESTIVAL

November 21-23

2025 Flex Passes Now Available
<https://www.thebarnplayers.org/tickets/>

PAUL OTTO'S RIMANN **LIQUORS** of Prairie Village

***New Ownership,
Same Great
Service!***



Paul and Sarah Otto

**Prairie Village Shopping Center
3917 Prairie Lane
Prairie Village, KS 66208
913-236-5311**

www.rimannliquors.com



FOLLOW

US ON FACEBOOK & INSTAGRAM

Special Thanks to our 2024 Season Flex Pass Patrons

Stefan Bergstrom
Vida Bikales
Virginia Booker
Linda Carlson
Cynthia Chandler
Ronald Cline
Don Dagenais
Maggie Evans
Kevin Fullerton
Christopher Gaikwad
Jonathan Gaikwad
Milton Gimlin
Barbara Haviland
Mary Pat Kinney
Julie Larsen
Carol Logan
Dennis Maddux-Phillips
Jeanne Marx
Kathy Migneron
Harold Milford
Sybil Murphy
Barbara & Chris Nichols
Mel & Bud Nolker
Carolyn Osborn & Otto
Knapheide
Pat Roberts
Jeanne Sears
Becca Wagner
Maggie Wood

The heart of any community theatre is its base of volunteers, contributors, and sponsors. That means your support is absolutely essential to our mission of providing quality theatre for our community. Please become a friend of The Barn Players Theatre, using any of these six “Friends” categories:

BENEFACTOR (\$1,000 and up)	STARRING ROLE (\$150 - \$399)
ANGEL (\$700 - \$999)	CHORUS (\$50 - \$149)
PATRON (\$400 - \$699)	FAN (\$10 - \$49)

Please help support The Barn Players! Your donation/gift is completely tax deductible and directly supports our efforts to bring you the very best in local community theatre. The Barn Players thank all who have donated and supported our efforts.

Benefactor:

Arts Council of Johnson County, Eldon and Patricia Anderson, Francis Family Foundation, Barb & Chris Nichols, Darren Sextro & John Rensenhouse, Julia Sykes

Patron:

Beverly Godwin & Mike Roberts, Kathleen & Paul Marx, Kay Noonan, Rensenhouse Charitable Foundation, Miguel Romero, Rob & Carol Hallifax

Starring Role:

J. Kent Barnhart & Brian McGinness, Michelle & David McIntire, Jon & Corinne Bakker, Don Dagenais, Nancy & Ed Wallerstein

Chorus:

James & Debbie Azeltine, Susan Leach, Constance & Michael Martin, Daniel Vazquez, Valerie & Stephen Veale, Linda Wallace

Fan:

Kelli Grimm, Joy Richardson, Mark & Mara Lambert, Walter Russell